



SQUADRON 68

US OPTIONS PRICE LIST

EFFECTIVE FROM 1ST JANUARY 2024

Valid for yacht deliveries from 1st January to 31st December 2024

Use the links below to download the latest free Adobe Acrobat PDF Reader to suit your device



For use on PC or Mac

For use on tablet or smartphone

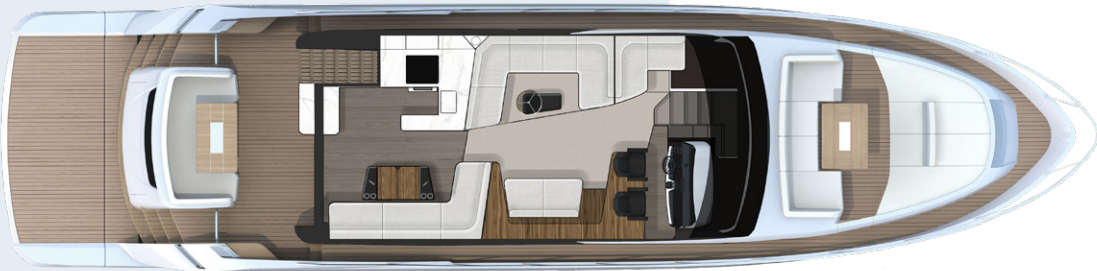
SQUADRON 68

OPTIONAL SPECIFICATION

LAYOUT



Flybridge

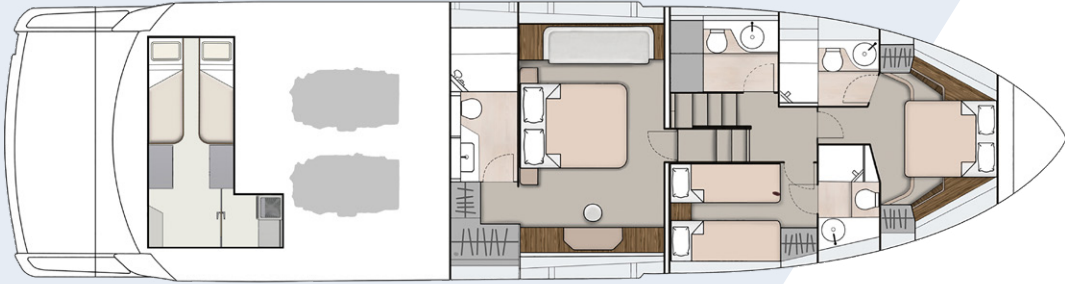


Main deck

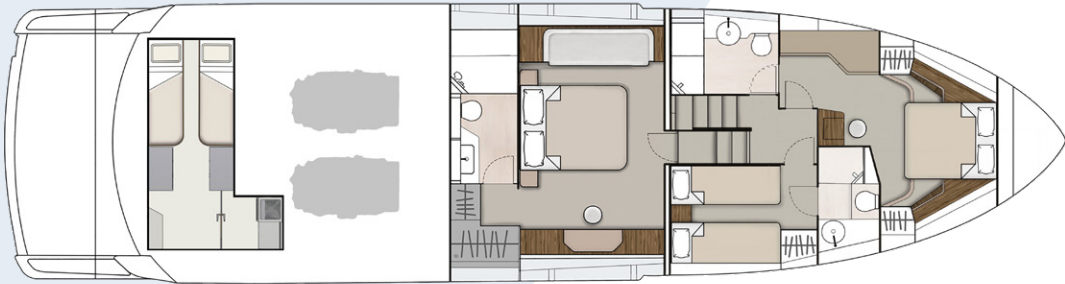
SQUADRON 68

OPTIONAL SPECIFICATION

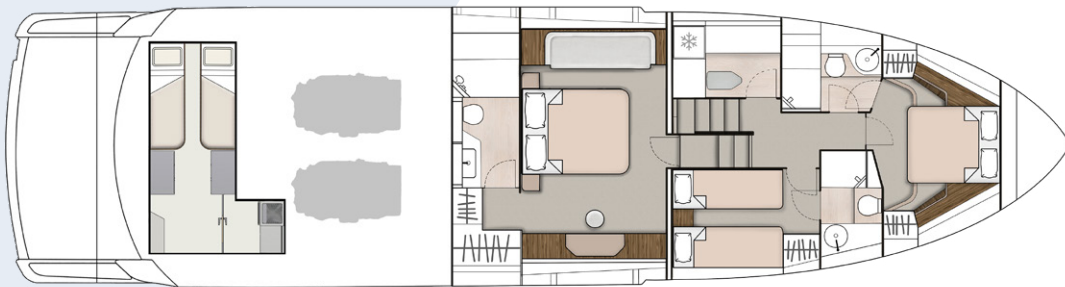
LAYOUT



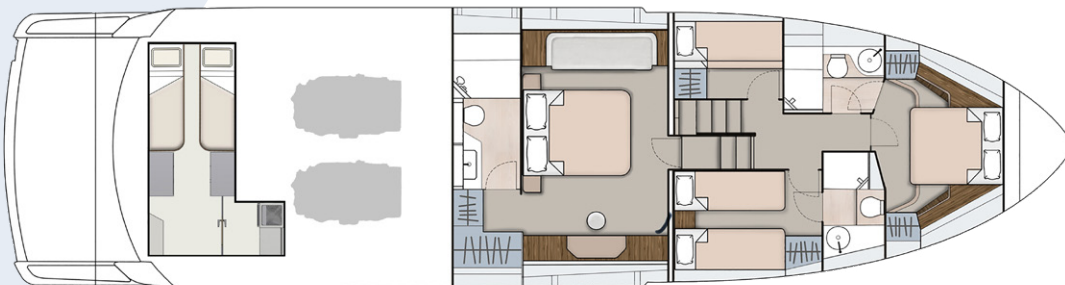
3 Cabin



3 Cabin with extended VIP



3 Cabin with utility room



4 Cabin

SQUADRON 68

OPTIONAL SPECIFICATION

	MSRP (\$)	Select option			
ENGINES					
Twin Caterpillar® C18-1150, 2300 hp	\$4,352,000				
Twin Caterpillar® C32-1622, 3244 hp	\$4,865,000				
LAYOUT					
Extended forward VIP cabin OR	\$22,865				
Utility room (in lieu of day head) OR	\$18,615				
Fourth cabin (in lieu of day head)	\$22,865				
Sideboard to salon (in lieu of starboard sofa)	\$8,245				
Drawers to master cabin (in lieu of sofa)	\$8,840				
Electric sliding bed conversion to starboard cabin (twin to double)	\$9,775				
Crew cabin (twin berth)	\$40,715				
EXTERIOR COLOR					
White		NCO			
Hull band					
Light Grey	Midnight Blue	Steel Blue	\$37,315		
Antifoul					
Black	Blue	Grey	White	None	NCO
Waterline stripe					
Silver/Graphite	Silver/Navy				NCO
DYNAMIC CONTROL & STABILIZATION					
Bow & stern thrusters - proportional, electric OR	\$35,615				
Bow & stern thrusters - hydraulic (not available with Seakeeper® stabilizer)	\$74,120				
Sleipner® hydraulic vector fin stabilizer (not available with C-32 engines) OR	\$198,815				
Humphree® electric fin stabilizer (not available with C-32 engines)	\$218,280				
Seakeeper® 18 gyroscopic stabilizer	\$263,415				
Humphree® Interceptors					
COMFORT system: Auto Trim & Auto List	\$24,565				
DYNAMIC PLUS system: Stabilization Roll, Co-ordinated Turn, Auto Trim & Auto List	\$43,265				

TOTAL

Effective from 1st January 2024.

All options to be ordered 16 weeks prior to start of build.

NCO = No Cost Option

POA = Price On Application

SQUADRON 68

OPTIONAL SPECIFICATION

	MSRP (\$)	Select option
ELECTRONICS & NAVIGATION		
Garmin® Automatic Identification System (AIS)	\$2,542	
Garmin® cameras to engine room & cockpit	\$5,015	
Second Garmin® 16" multi-function display to lower helm	\$14,365	
Third Garmin® 16" multi-function display to lower helm	\$14,365	
Garmin® 16" multi-function display to upper helm	\$14,365	
Second Garmin® 16" multi-function display to upper helm	\$14,365	
Third Garmin® 16" multi-function display to upper helm	\$14,365	
Garmin® GMR Fantom 54 open array radar	\$12,410	
Garmin® Surround View camera system	\$40,715	
AUDIO/VISUAL		
Fusion® PLUS	\$31,875	
Fusion Apollo® audio & waterproof speakers to foredeck		
Smart TV, Apollo® audio & speakers to all guest cabins		
WiFi connectivity throughout		
Premium	\$56,015	
Integrated Sonos® audio system with flush-mounted speakers, roaming speakers, amplifiers and subwoofers		
Zoned throughout the yacht and controlled via the Sonos (Apple & Android) App		
Smart TVs to guest cabins		
WiFi connectivity throughout		
43" high/low SmartTV to flybridge	\$7,565	
KVH6 Sat TV throughout, with secondary 'dummy' dome	\$48,025	
'Dummy' domes to radar arch/HardTop (x2)	\$9,860	
HEATING		
Heating system to interior (for use when ambient water temperature <5°C)	\$27,115	
DOMESTIC APPLIANCES		
Dishwasher to galley	\$4,165	
Additional galley storage to starboard with	\$19,465	
Fridge & freezer	Wine cooler & fridge	Wine cooler & freezer
Icemaker to salon	\$5,780	
Freshwater maker	\$31,960	
Freezer to lobby	Washer/dryer to lobby	\$5,015
Grey waste tank with diverter for sea discharge or deck pump-out	\$13,515	
Kenyon® griddle & icemaker to flybridge bar	\$6,715	
TOTAL		

Effective from 1st January 2024.

All options to be ordered 16 weeks prior to start of build.

NCO = No Cost Option

POA = Price On Application

5/10

SQUADRON 68

OPTIONAL SPECIFICATION

	MSRP (\$)	Select option
DECK HARDWARE		
Anchor upgrade	\$19,975	
Lewmar® semi-automatic anchor system to helm with chain counter		
Polished stainless 99lbs Ultra™ anchor		
80m of 12mm stainless steel chain		
Stainless steel bow plate		
Aft mooring capstans	\$9,265	
Anchor wash	\$2,040	
Trifold patio door	\$33,065	
Side access door to lower helm	\$32,725	
Side boarding gates and ladder	\$11,475	
Passarelle (4.5m)	\$74,715	
Glendinning® Cable Master	\$20,825	
Teak to side decks & foredeck	\$42,415	
Teak to flybridge floor	\$52,615	
Integrated mood lighting to teak flybridge dining table	\$2,720	
Teak flybridge companion table with infill cushion and electric pedestal for sunbed conversion	\$16,915	
Teak foredeck table	\$6,715	
Cockpit bar stools (x2)	\$6,375	
Freshwater deck wash outlets	\$2,040	
TENDER		
Universal-fit chocks & pad eyes to bathing platform	\$4,420	
Air compressor (to crew cabin/aft lazarette)	\$2,040	
Williams® 325 TurboJet™	POA	
LIGHTING		
Underwater lights		
Dual color (blue/white)		
4 to transom	\$15,215	
2 to port and 2 to starboard sides	\$15,215	
OR		
RGBW		
4 to transom	\$26,520	
2 to port and 2 to starboard sides	\$26,520	
Exterior mood lighting	Blue White	\$14,365
Interior mood lighting		\$12,665
TOTAL		

Effective from 1st January 2024.

All options to be ordered 16 weeks prior to start of build.

NCO = No Cost Option

POA = Price On Application

SQUADRON 68

OPTIONAL SPECIFICATION

	MSRP (\$)	Select option
FINISHING TOUCHES		
Electric high/low dining/coffee table to salon	\$14,365	
Digital safe	\$1,275	
Toilet/bidet to en suites (excluding crew)	\$6,460	
COVERS		
HardTop with integrated lighting, electric sliding fabric sunroof & powered aft sunshade	\$203,915	
Bimini		
Beige Chine Linen Navy Charcoal Black	\$33,915	
Cockpit canopy		
Beige Chine Linen Navy Charcoal Black	\$12,155	
Foredeck sky canopy		
Linen Navy Charcoal Black	\$21,675	
Flybridge sky canopy		
Linen Navy Charcoal Black	\$8,840	
Mosquito screens to opening portholes	\$2,720	
UV heat reduction ceramic film to salon windows, patio door & windshield	\$13,175	
Blackout windshield cover	\$5,270	
EXTERIOR UPHOLSTERY		
Flybridge, cockpit & foredeck (feature contrast color in Petrol)		
Movida Aluminium Movida Macadamia Movida Plata	NCO	
TIMBER		
Oak Satin (with contrast features)		NCO
Oak Gloss (with contrast features)		\$21,420
Walnut Satin		\$33,915
Walnut Gloss		\$41,225
TIMBER FLOORING (TO GALLEY & DINETTE)		
Planked Oak		
White Oak Smoked Oak Nero Oak		NCO
EN SUITE FLOORING		
Random Oak®		
Lime White Dove Grey Slate Grey Chocolate		NCO
Solid Surface®		
Koko		\$6,205
TOTAL		

Effective from 1st January 2024.

All options to be ordered 16 weeks prior to start of build.

NCO = No Cost Option

POA = Price On Application

7/10

SQUADRON 68

OPTIONAL SPECIFICATION

				MSRP (\$)	Select option
WORKTOPS					
GALLEY					
Koko					NCO
Carrara White	Concrete Haze	Chalk Venato	Travertine Haze	\$2,380	
EN SUITES					
Koko					NCO
Carrara White	Chalk Venato	Travertine Haze		\$4,590	
SALON SOFAS					
Fabric					
Alpaka Cloud	Alpaka Porcelain	Alpaka Husky	Alpaka Pepper	NCO	
Fabric					\$9,095
Homespun Dove	Relax Linen	Schino Natural	Gypsum Inachi		
Homespun Arctic	Relax Cloud	Schino Pumice	Nimbus		
DINETTE SOFA					
Leather					
Birch	Limestone	Heron		NCO	
MASTER CABIN SOFA & STOOL					
Fabric					
Alpaka Cloud	Alpaka Porcelain	Alpaka Husky	Alpaka Pepper	NCO	
Fabric					\$3,825
Homespun Dove	Relax Linen	Schino Natural	Gypsum Inachi		
Homespun Arctic	Relax Cloud	Schino Pumice	Nimbus		
HEADBOARDS & BED SURROUNDS					
Alpaka Fleece/Pepper		Alpaka Pepper/Anthracite		NCO	
VENETIAN BLINDS					
Main Deck					
Pearl	Powder	Matte Silver	Concrete	NCO	
Lower Deck					
Pearl	Powder	Matte Silver	Concrete	NCO	
TOTAL					

Effective from 1st January 2024.

All options to be ordered 16 weeks prior to start of build.

NCO = No Cost Option

POA = Price On Application

SQUADRON 68

OPTIONAL SPECIFICATION

	MSRP (\$)	Select option						
CARPET (TO SALON, CABINS & LOBBY)								
3-CABIN								
Wool								
Regal Alabaster	Regal Beaver	Regal Welsh Slate	NCO					
Westex Silken Velvet								
Pumice	Charm	Smoulder	Tabby Grey	\$14,365				
4-CABIN								
Wool								
Regal Alabaster	Regal Beaver	Regal Welsh Slate	NCO					
Westex Silken Velvet								
Pumice	Charm	Smoulder	Tabby Grey	\$15,215				
COMMISSIONING & HANDOVER								
Commissioning and customer handover at the Fairline Commissioning Centre			NCO					
Customer handover at the vessel's home marina			POA					
Full fuel tanks, charged at the prevailing rate			POA					
OWNERS MANUAL								
English	Finnish	French	German	Italian	Norwegian	Russian	Spanish	Swedish

TOTAL

Effective from 1st January 2024.

All options to be ordered 16 weeks prior to start of build.

NCO = No Cost Option

POA = Price On Application

TERMS & CONDITIONS

DELIVERY

All prices are ex-works, Oundle, UK, and exclude shipping and duties.

ORDERING & PRICING CONDITIONS

This price list replaces all previous editions and is valid for orders placed with a 20% deposit and specification for delivery by 31st December 2024.

A 30% stage payment is due on installation of engines. Final boat payment is due on completion of construction at the factory.

We reserve the right to change prices without notice or liability.

All options must be specified at the time of order. No additions or alterations to orders will be accepted after the boat specification is confirmed by the factory.

Retrofit of options is not available.

IMPORTANT NOTICES

We continually seek to improve the specification and design of our boats, so alterations and upgrades to specifications take place frequently.

Whilst every effort is made to keep all sales literature up to date and accurate, it should not be regarded as an infallible statement of current specifications and does not constitute an offer for the sale of any boat.

Appointed dealers are NOT agents of Fairline Yachts Ltd or Fairline Yachts Americas LLC, and are not authorised to commit Fairline by any express or implied undertaking or representation.

PERFORMANCE FIGURES & ESTIMATES

Power figures quoted in our literature for engines is measured as crankshaft output.

Performance estimates are given in good faith but are in no way guaranteed for any boat. Dirt on the bottom of the boat, damage to propellers, engine tuning, external water and air temperatures, and the weight of crew, fuel and water carried can all adversely affect performance. For these and other reasons, we can give no performance guarantees.

Published by Fairline Yachts Americas LLC, 4000 Hollywood Boulevard, Suite 555-S, Hollywood, Florida 33021, USA
Email: info@fairline-americas.com
fairline-americas.com

© FAIRLINE YACHTS LTD 2024. ALL RIGHTS RESERVED. FAIRLINE, TARGA, PHANTOM, SQUADRON AND F-LINE ARE REGISTERED TRADEMARKS OF FAIRLINE YACHTS LTD. TOGETHER WITH ALL TEXT AND IMAGES CONTAINED IN THIS PRINTED MATERIAL, THEY ARE PROTECTED BY COPYRIGHT AND MAY NOT BE REPRODUCED IN ANY FORM WITHOUT THE EXPRESS WRITTEN PERMISSION OF THE COPYRIGHT OWNERS.

v. 1

Fairline Yachts Americas reserve the right to change pricing and specification without prior notice.

Fairline Yachts Americas Terms of Business apply. All previous pricelists are replaced.