



TARGA 45 OPEN

US OPTIONS PRICE LIST

EFFECTIVE FROM 1ST JANUARY 2024

Valid for yacht deliveries from 1st January to 31st December 2024

Use the links below to download the latest free Adobe Acrobat PDF Reader to suit your device



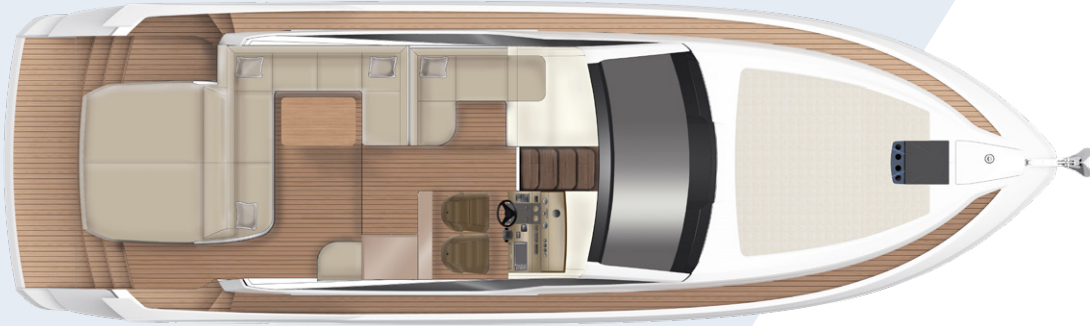
For use on PC or Mac

For use on tablet or smartphone

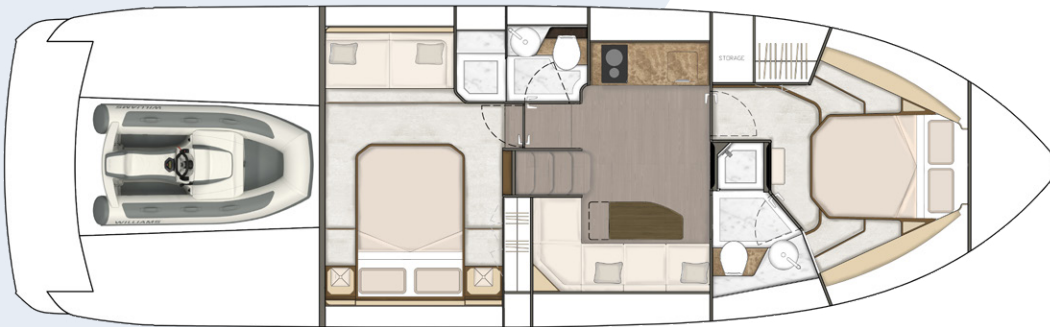
TARGA 45 OPEN

OPTIONAL SPECIFICATION

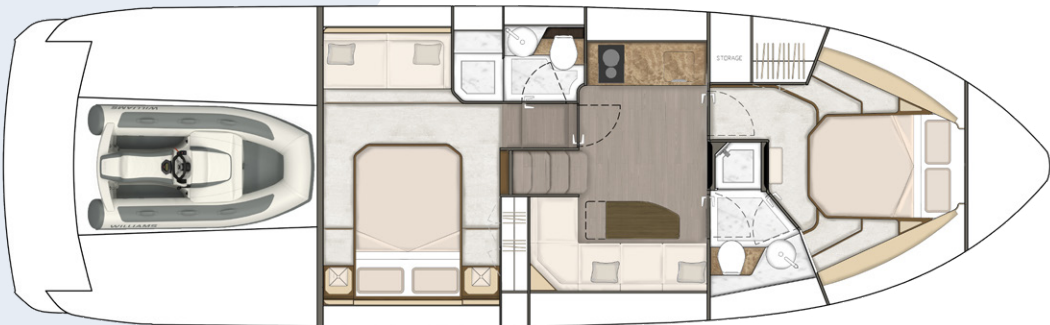
LAYOUT



Main deck



2 Cabin: Forward Master



2 Cabin: Mid Master

TARGA 45 OPEN

OPTIONAL SPECIFICATION

	MSRP (\$)	Select option
ENGINES		
Twin Volvo® Penta IPS650 D6-480, 960 hp	\$1,380,000	
LAYOUT		
Mid Master cabin layout	\$7,140	
Bed conversion to lower salon	\$5,865	
Sliding scissor berth to forward cabin	\$5,270	
Twin sliding beds to mid cabin	\$3,570	
Drawers to mid cabin (in lieu of sofa)	\$8,840	
EXTERIOR COLOR		
White	NCO	
Hull band		
Light Grey	Midnight Blue	Steel Blue
		\$24,310
Antifoul		
Black	Blue	Grey
	White	None
		NCO
Waterline stripe		
Silver/Graphite	Silver/Navy	
		NCO
DYNAMIC CONTROL & STABILIZATION		
Bow thruster	\$14,195	
Dynamic Positioning System	\$30,260	
Volvo Assisted Docking System (DPS must also be selected)	\$12,410	
Seakeeper® 3 gyroscopic stabilizer	\$84,915	
Humphree® Interceptors		
COMFORT system: Auto Trim & Auto List	\$13,515	
DYNAMIC PLUS system: Stabilization Roll, Co-ordinated Turn, Auto Trim & Auto List	\$26,265	
ELECTRONICS & NAVIGATION		
Garmin® Automatic Identification System (AIS)	\$2,542	
Garmin® cameras to engine room & cockpit	\$5,015	
Garmin® 12" multi-function display to helm OR	\$11,135	
Garmin® 16" multi-function display to helm	\$14,365	
Garmin® GMR Fantom 24" dome radar	\$5,695	
Garmin® Surround View camera system (12" or 16" MFD must also be selected)	\$41,565	
Conduits & pull cords (1 to helm and 3 to lower deck)	\$3,060	
TOTAL		

Effective from 1st January 2024.

All options to be ordered 16 weeks prior to start of build.

NCO = No Cost Option

POA = Price On Application

TARGA 45 OPEN

OPTIONAL SPECIFICATION

	MSRP (\$)	Select option
AUDIO/VISUAL		
Fusion® PLUS	\$22,015	
Additional speakers & subwoofer to cockpit		
Smart TVs, Apollo® audio & flush-mounted speakers to lower salon and guest cabin		
WiFi connectivity throughout		
Premium	\$28,815	
Integrated Sonos® audio system with flush mounted speakers, roaming speakers, amplifiers and subwoofer		
Zoned throughout the yacht and controlled via the Sonos (Apple or Android) App		
Smart TVs to lower salon and guest cabin		
WiFi connectivity throughout		
Power inverter	\$3,825	
AIR CONDITIONING & HEATING		
Air conditioning; reverse cycle	\$53,465	
Air conditioning to cockpit	\$14,365	
Eberspächer® hydronic heating system to interior & cockpit	\$22,015	
Windshield demist (if heating option is specified)	\$6,715	
DECK HARDWARE		
Anchor upgrade	\$8,840	
Lewmar® semi-automatic anchor system to helm with chain counter		
Polished stainless 46lbs Ultra™ anchor		
40m of 8mm stainless steel chain		
Stainless steel bow plate		
Passarelle (2.9m)	\$53,465	
Aft mooring capstans	\$5,270	
Teak to cockpit floor (forward section)	\$8,075	
Teak to side decks	\$18,870	
Teak cockpit table (with cantilever leg for stowage)	\$10,965	
Open bow pulpit rail	\$5,695	
Freshwater deck wash outlets	\$2,040	
GARAGE/TENDER		
Submersible bathing platform with 880lbs lift capacity	\$48,365	
Garage fit out: hydraulic winch and roller system for Williams® 280 MiniJET™	\$12,410	
Williams® 280 MiniJET™	POA	
DOMESTIC APPLIANCES		
Grey waste tank with diverter for sea discharge or deck pump-out	\$7,565	
Cockpit bar with integrated fridge, griddle & icemaker	\$10,625	
TOTAL		

Effective from 1st January 2024.

All options to be ordered 16 weeks prior to start of build.

NCO = No Cost Option

POA = Price On Application

TARGA 45 OPEN

OPTIONAL SPECIFICATION

	MSRP (\$)	Select option
LIGHTING		
Underwater transom lights x 2 (dual color blue/white)	\$5,525	
Exterior mood lighting Blue White	\$3,995	
Interior mood lighting	\$6,205	
FINISHING TOUCHES		
Electric height adjustable helm seat	\$3,570	
Skylight to lower salon (with integrated blind)	\$3,315	
Feature bulkhead to mid cabin with leather, mirror & timber inlays	\$3,825	
Mattress, internally sprung:		
Double	\$850	
Single (x2)	\$850	
Digital safe	\$1,275	
Toilet/bidet to en suites	\$3,230	
COVERS		
Cockpit canopy		
Beige Chine Linen Navy Charcoal Black	\$9,265	
Mosquito screens to opening portholes	\$2,040	
UV heat reduction ceramic film to side windows & windshield	\$5,335	
Blackout windshield cover	\$3,315	
EXTERIOR UPHOLSTERY		
Cockpit		
Movida Macadamia Movida Beige Movida Taupe	NCO	
Reclining foredeck sunbed cushions (with cover)	\$9,265	
TIMBER		
Oak Satin	NCO	
Oak Gloss	\$8,925	
Walnut Satin	\$15,215	
Walnut Gloss	\$20,825	
RANDOM OAK® FLOORING (TO SALON & GALLEY)		
Lime White Dove Grey Slate Grey Chocolate	NCO	
VENETIAN BLINDS		
Silver Bullion Gold Bullion	NCO	
Oak Walnut	\$3,740	
TOTAL		

Effective from 1st January 2024.

All options to be ordered 16 weeks prior to start of build.

NCO = No Cost Option

POA = Price On Application

TARGA 45 OPEN

OPTIONAL SPECIFICATION

	MSRP (\$)	Select option
WORKTOPS		
GALLEY & EN SUITES		
Koko	NCO	
Carrara White Avalanche	\$2,482	
CABIN CARPET		
Wool		
Regal Alabaster Regal Beaver Regal Welsh Slate	NCO	
Westex Silken Velvet		
Pumice Charm Smoulder Tabby Grey	\$5,015	
HEADBOARDS		
Cardiff Fawn Cardiff Espresso	NCO	
LOWER SALON SOFA		
Fabric/Leather	NCO	
Wicker Dove/Ivory Loop White Sands/Essential		
Wicker White Sands/Seely Loop Nickel/Silverbirch		
Tumbleweed White Sands/Winter White		
Full Leather		
Winter White Ivory Seely Essential Silverbirch	\$5,865	
MID CABIN SOFA		
Fabric/Leather	NCO	
Wicker Dove/Ivory Loop White Sands/Essential		
Wicker White Sands/Seely Loop Nickel/Silverbirch		
Tumbleweed White Sands/Winter White		
Full Leather		
Winter White Ivory Seely Essential Silverbirch	\$4,845	
COMMISSIONING & HANDOVER		
Commissioning and customer handover at the Fairline Commissioning Centre	NCO	
Customer handover at the vessel's home marina	POA	
Full fuel tanks, charged at the prevailing rate	POA	
OWNERS MANUAL		
English Finnish French German Italian Norwegian Russian Spanish Swedish		

TOTAL

Effective from 1st January 2024.

All options to be ordered 16 weeks prior to start of build.

NCO = No Cost Option

POA = Price On Application

TERMS & CONDITIONS

DELIVERY

All prices are ex-works, Oundle, UK, and exclude shipping and duties.

ORDERING & PRICING CONDITIONS

This price list replaces all previous editions and is valid for orders placed with a 20% deposit and specification for delivery by 31st December 2024.

Final boat payment is due on completion of construction at the factory.

We reserve the right to change prices without notice or liability.

All options must be specified at the time of order. No additions or alterations to orders will be accepted after the boat specification is confirmed by the factory.

Retrofit of options is not available.

IMPORTANT NOTICES

We continually seek to improve the specification and design of our boats, so alterations and upgrades to specifications take place frequently.

Whilst every effort is made to keep all sales literature up to date and accurate, it should not be regarded as an infallible statement of current specifications and does not constitute an offer for the sale of any boat.

Appointed dealers are NOT agents of Fairline Yachts Ltd or Fairline Yachts Americas LLC, and are not authorised to commit Fairline by any express or implied undertaking or representation.

PERFORMANCE FIGURES & ESTIMATES

Power figures quoted in our literature for engines is measured as crankshaft output.

Performance estimates are given in good faith but are in no way guaranteed for any boat. Dirt on the bottom of the boat, damage to propellers, engine tuning, external water and air temperatures, and the weight of crew, fuel and water carried can all adversely affect performance. For these and other reasons, we can give no performance guarantees.

Published by Fairline Yachts Americas LLC, 4000 Hollywood Boulevard, Suite 555-S, Hollywood, Florida 33021, USA
Email: info@fairline-americas.com
fairline-americas.com

© FAIRLINE YACHTS LTD 2024. ALL RIGHTS RESERVED. FAIRLINE, TARGA, PHANTOM, SQUADRON AND F-LINE ARE REGISTERED TRADEMARKS OF FAIRLINE YACHTS LTD. TOGETHER WITH ALL TEXT AND IMAGES CONTAINED IN THIS PRINTED MATERIAL, THEY ARE PROTECTED BY COPYRIGHT AND MAY NOT BE REPRODUCED IN ANY FORM WITHOUT THE EXPRESS WRITTEN PERMISSION OF THE COPYRIGHT OWNERS.

v. 1

Fairline Yachts Americas reserve the right to change pricing and specification without prior notice.

Fairline Yachts Americas Terms of Business apply. All previous pricelists are replaced.